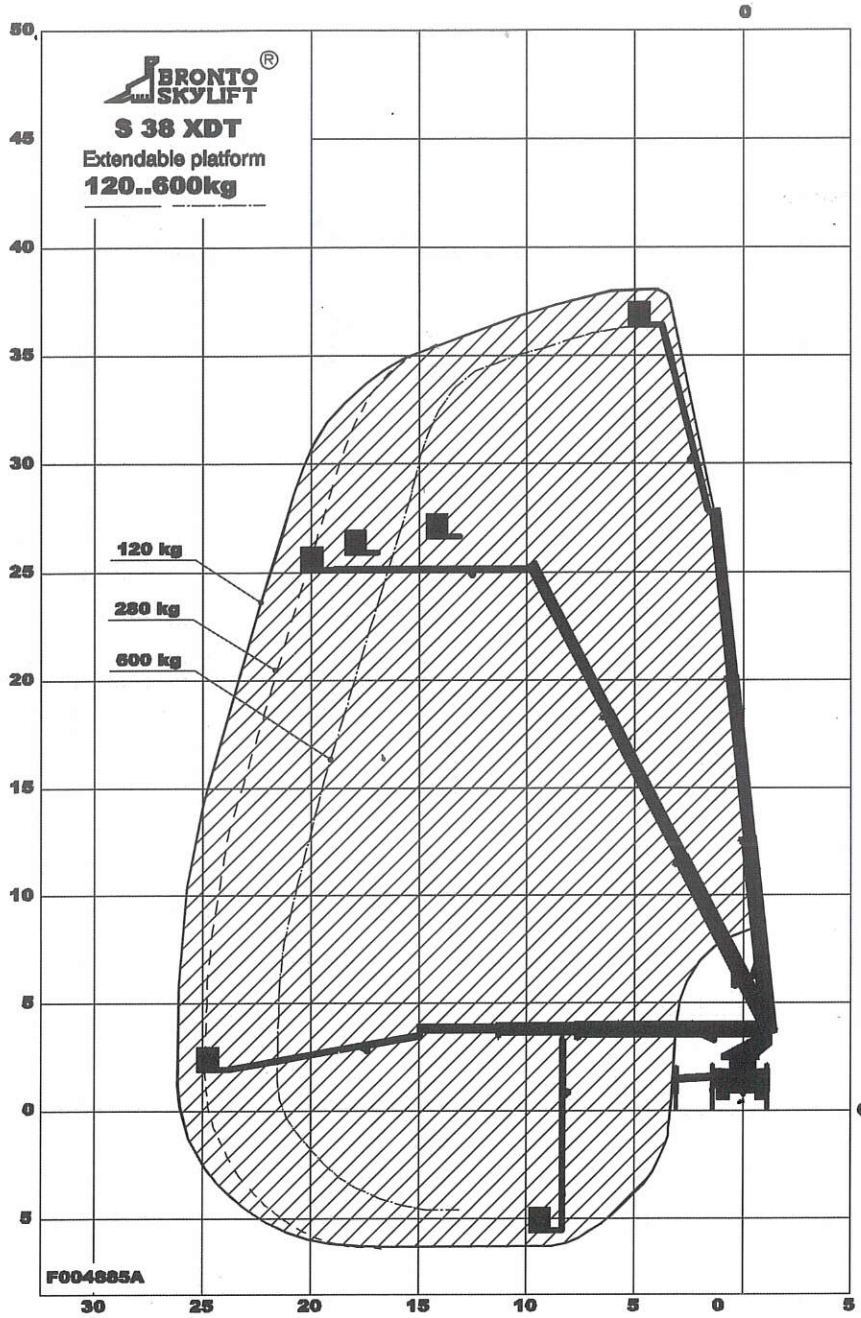


OUTREACH DIAGRAMS



TECHNICAL DATA

Safe working load max. : 600 kg

Max. permitted wind speed : 12.5 m/s

Typical GVW : 18 ton

min. operating weight : 17 ton

Outrigger width and length c/c

- normal jacking : 6.2/5.7 m
- one side jacking : 4.2/5.7 m
- narrow jacking : 2.8/5.7 m

Calculation code :